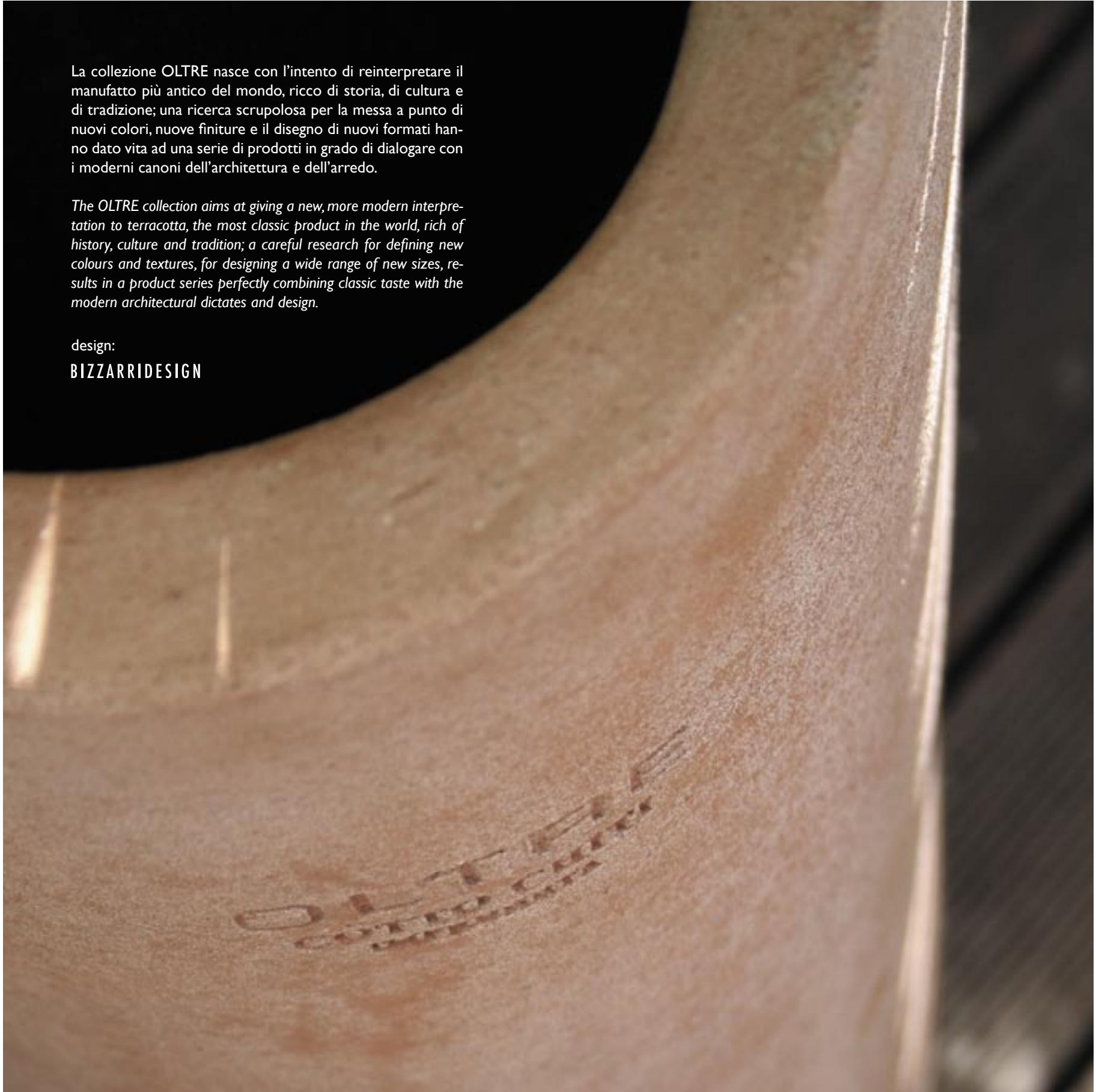




**OLTRE**  
COLLECTION



**COTTO CHITI**  
IMPRUNETA FATTO A MANO

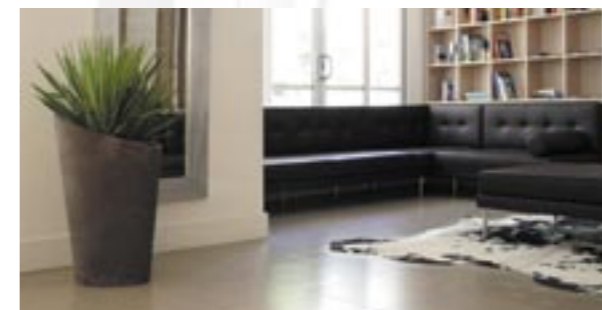
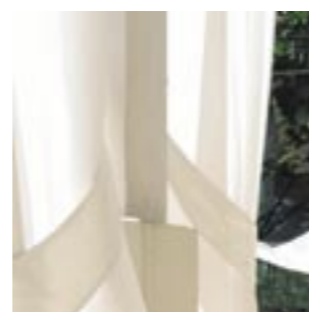
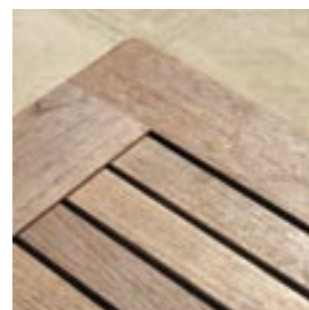
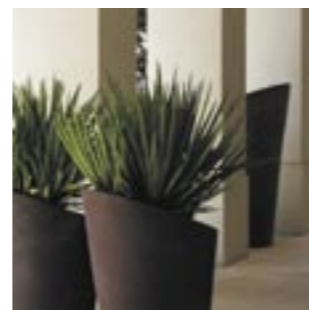
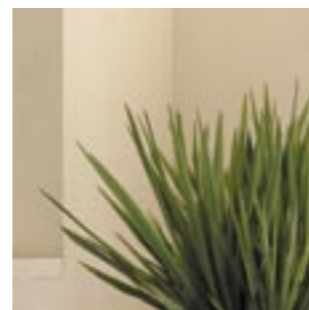
A close-up photograph of a curved, light-brown terracotta surface. The surface has a subtle, embossed logo that reads "OLTRE" in a stylized font, with "BIZZARRIDESIGN" written in smaller letters below it. The lighting is soft, highlighting the texture and slight imperfections of the material. The background is dark and out of focus.

La collezione OLTRE nasce con l'intento di reinterpretare il manufatto più antico del mondo, ricco di storia, di cultura e di tradizione; una ricerca scrupolosa per la messa a punto di nuovi colori, nuove finiture e il disegno di nuovi formati hanno dato vita ad una serie di prodotti in grado di dialogare con i moderni canoni dell'architettura e dell'arredo.

*The OLTRE collection aims at giving a new, more modern interpretation to terracotta, the most classic product in the world, rich of history, culture and tradition; a careful research for defining new colours and textures, for designing a wide range of new sizes, results in a product series perfectly combining classic taste with the modern architectural dictates and design.*

design:

**BIZZARRIDESIGN**



EGG

cm h 80 x 50  
cm h 110 x 70



## ROUND

cm h 80 x Ø 55  
cm h 120 x Ø 70

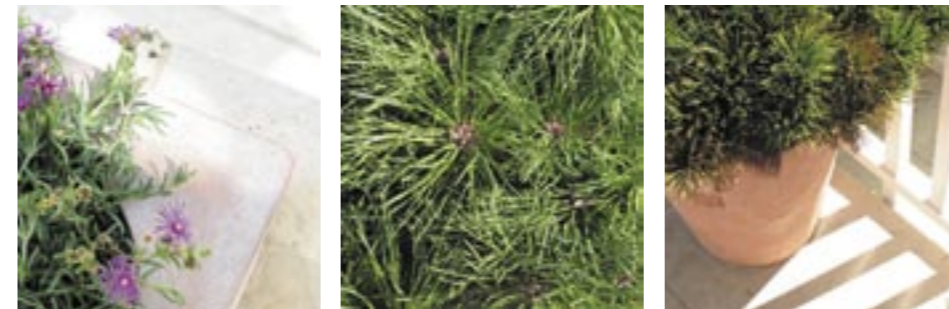


### THREE 1

cm h 75 x 58  
cm h 110 x 68,5

### EGG

cm h 80 x 50  
cm h 110 x 70



### RING

cm 60 x 60

### CROOKED

cm h 63 x Ø 45



## ROUND

cm h 80 x Ø 55  
cm h 120 x Ø 70

## SLIM

cm h 36 senza bordo  
cm h 70  
cm h 90



THREE 1

cm h 75 x Ø 58  
cm h 110 x Ø 68,5

THREE 2

cm h 55 x Ø 50  
cm h 90 x Ø 60

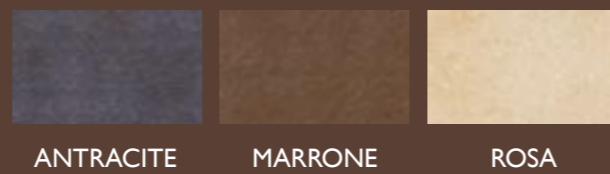
## DISEGNI

---



## COLORI

---



direzione artistica e design  
**Stefano Bizzarri**

fotografia e grafica  
**Cesare Francolini**

stampa  
**Grapho 5 Service**

si ringraziano  
per la cortese disponibilità  
e collaborazione:

**Fabbri** - Vivaio - Rimini - Italy  
**Le Rose** - Suite Hotel - Rimini - Italy  
**Zenzero** - Sea Living - Porto Verde - Italy



**Impruneta** s.r.l.  
Via Provinciale Chiantigiana, 67  
50023 Impruneta (FI)

Stabilimento di Produzione  
Via Provinciale Chiantigiana, 169  
50023 Impruneta (FI)

Tel. +39 055 207030

[info@cottochiti.com](mailto:info@cottochiti.com)  
[www.cottochiti.com](http://www.cottochiti.com)

GRUPPO  
**RIPABIANCA**  
